

www.centrocommercialeairone.it

Via C. Colombo, 79 | 35043 Monselice (PD)
+39 0429 72755



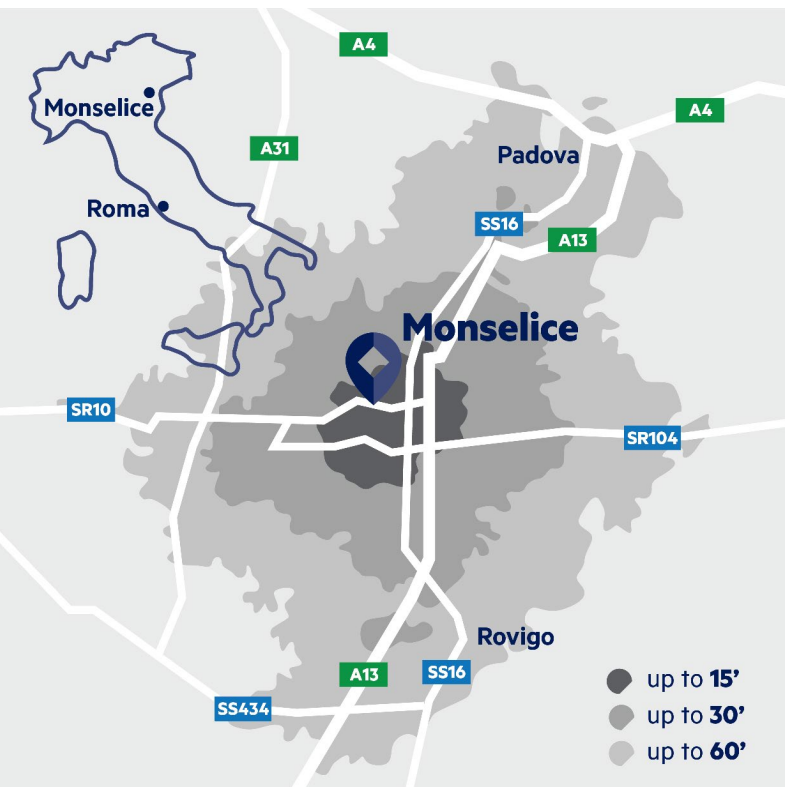
PROJECT INFORMATION

Airone is a shopping centre opened in 1997 with 36 shops, several storage units and one office. It is anchored by a Conad Spesa Facile supermarket and has a total GLA of 15.900 sqm. The shopping centre is located entirely on one level, with a mezzanine level accommodating the storage units and the office. Airone welcomes about 1,5 million visitors a year.

PROJECT LOCATION & CATCHMENT AREA

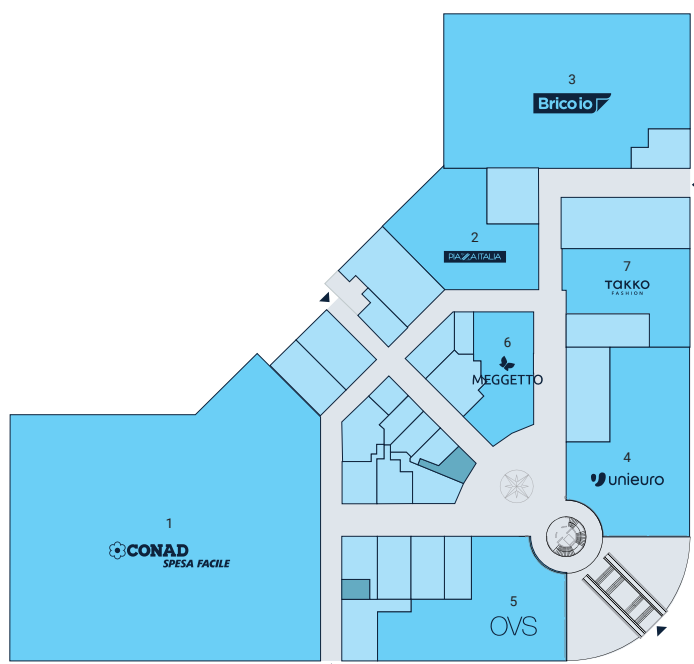
Monselice is located about 30 km south-west of Padua, in the north-eastern region of Veneto. Veneto benefits from a continuous and impressive tourist flow and the region is ranked first in Italy in terms of tourist presence, attracting over 60 million visitors every year. Airone is conveniently located in the south-western outskirts of Monselice, along the Regional Road SR10, close to the Monselice exit of the A13 (Bologna–Padua) motorway, about 3,5 km away. It has a good visibility from the SR10.

The catchment area includes about 700.000 inhabitants within a 30-minute drive. Airone is a well-established neighborhood scheme with no competition in the primary catchment area.

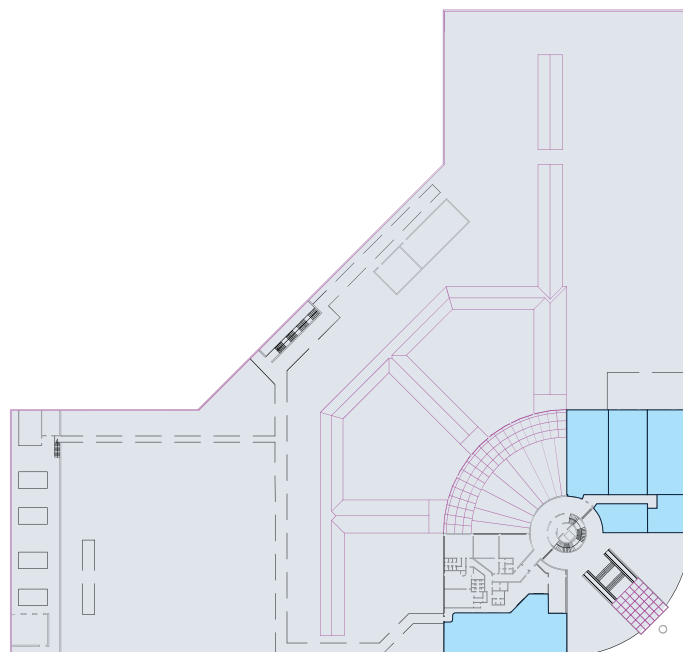


FLOOR PLAN

GROUND LEVEL



FIRST LEVEL



LEGEND

1. Conad Spesa Facile
2. Piazza Italia
3. Brico Io
4. Unieuro
5. OVS
6. Meggetto
7. Takko

TENANTS & ANCHORS

Supermarket Conad Spesa Facile	4.800 sqm
Anchor: OVS, Piazza Italia, Brico Io	5.900 sqm
Unieuro	
Shops	4.000 sqm
Storage	1.100 sqm
Office	100 sqm
Total GLA	15.900 sqm



Multi Corporation is the leading pan-European platform for integrated real estate management services. Since its foundation in 1982, the company has completed over 200 real estate projects with a total GLA of over 5 million sqm, an asset value of nearly 13 billion Euros and has received over 200 industry awards from its peers. Multi currently manages over 80 properties across Europe and welcomes over 400 million customers annually, spending an estimated €4 billion across over 7.200 stores, restaurants, and leisure facilities. Multi offers a full spectrum of services, including active asset and property management, operations, redevelopment and refurbishment, leasing, advisory, legal and compliance. Multi's in-depth knowledge of retailers, investors, visitors, and local markets provides owners of real estate an integrated and independent platform to protect and drive asset value at every phase of the property's lifecycle. Multi's broad financial, commercial, and technical expertise has enabled us to outperform the industry in terms of occupancy, net rental income and state-of-the-art marketing over the years. Multi actively manages assets in 13 countries. The company's headquarters are in The Netherlands, and has offices in Belgium, Germany, Hungary, Italy, Latvia, Poland, Portugal, Slovakia, Spain, Switzerland, Turkey and Ukraine.

Visit www.multi.eu for more information and to download the corporate profile.

CONTACT US

Multi Italy
Via Bonnet 6/A
20154 Milan
Italy

T. +39 02 304 62 800
F. +39 02 304 62 829
E. commerciale@multi.eu
www.multi.eu/it



Disclaimer. Despite the care and attention we have devoted to this leaflet, it is possible that the information it contains is incomplete or incorrect. This information is updated regularly and may change at any time with immediate effect and without prior notice. We do not guarantee that this information is fully up to date or suitable for the purpose for which you have consulted this information. All information is offered "as is" and without any warranty or guarantee regarding its accuracy, suitability or fitness for any purpose or otherwise. We exclude all liability for any direct or indirect damage of any kind arising from or in any way connected to the use of this information. Any copyright protected works or other information in this leaflet may not be published or reproduced without the permission of MULTI. The information contained in this leaflet is not legally binding. © MULTI Corporation bv.

May 2023